



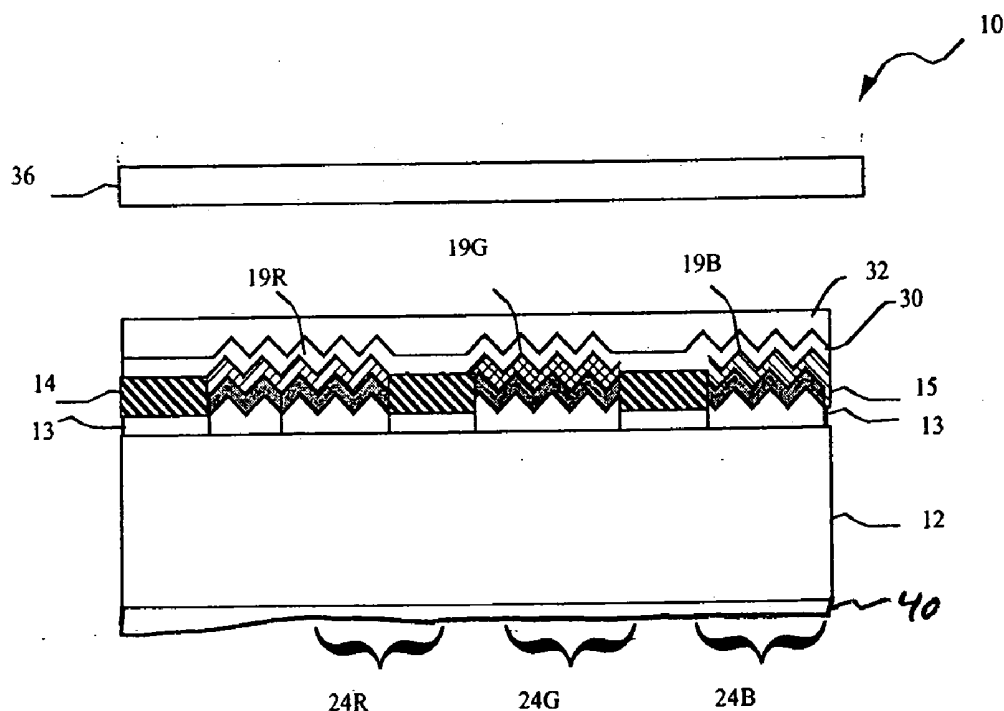
US 20050088084A1

(19) **United States**(12) **Patent Application Publication**  
**Cok**(10) **Pub. No.: US 2005/0088084 A1**(43) **Pub. Date: Apr. 28, 2005**(54) **ORGANIC POLARIZED LIGHT EMITTING  
DIODE DISPLAY WITH POLARIZER**(52) **U.S. Cl. .... 313/506; 313/504**(75) **Inventor: Ronald S. Cok, Rochester, NY (US)**(57) **ABSTRACT**

Correspondence Address:

**Thomas H. Close****Eastman Kodak Company****Patent Legal Staff****343 State Street****Rochester, NY 14650-2201 (US)**(73) **Assignee: Eastman Kodak Company**(21) **Appl. No.: 10/694,550**(22) **Filed: Oct. 27, 2003****Publication Classification**(51) **Int. Cl.<sup>7</sup> ..... H05B 33/00; H05B 33/22**

An organic light emitting diode display includes a substrate; a plurality of OLEDs formed on the substrate, the OLEDs emitting polarized light wherein the OLEDs comprise a layer defining a periodic grating structure; a first electrode layer conforming to the grating structure; an OLED material layer formed over the first electrode layer and conforming to the grating structure; and a second electrode layer formed over the OLED material layer and conforming to the grating structure, wherein the first and/or second electrode layers are metallic layers, whereby the periodic grating structure induces surface plasmon cross coupling in the metallic electrode layer(s) to emit polarized light; and a polarizer located over the substrate through which the polarized light is emitted.



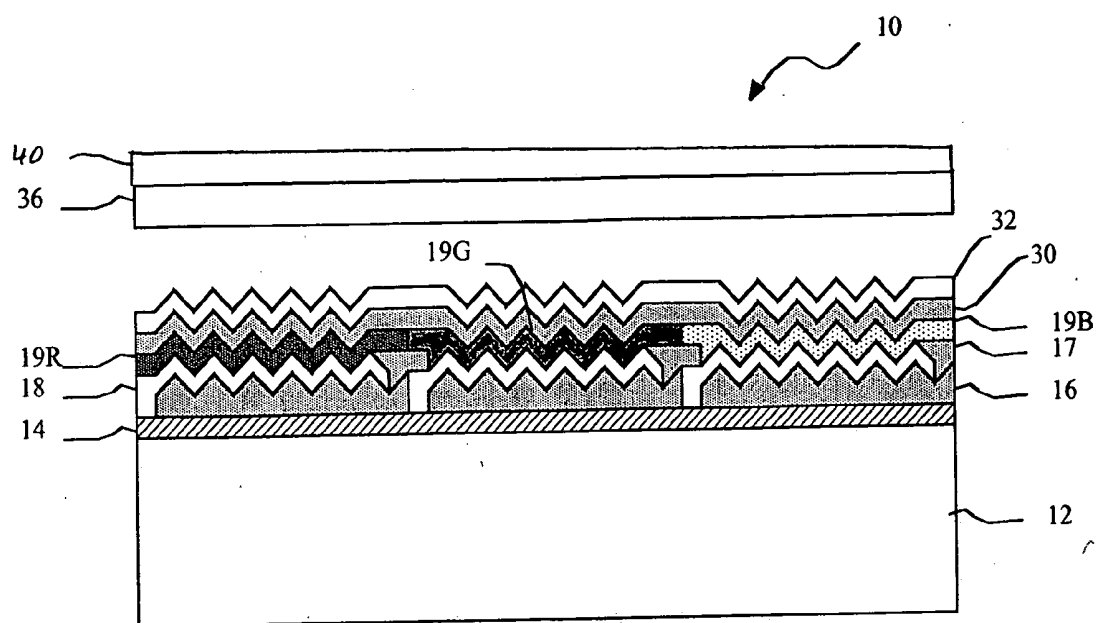


Fig. 1

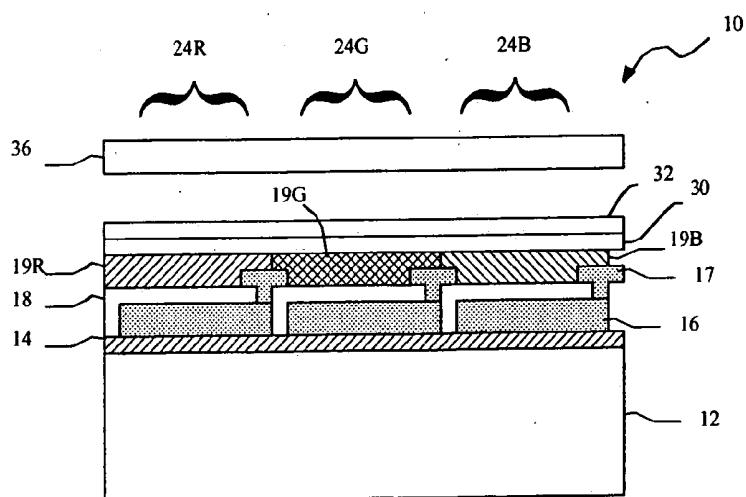


Fig. 2

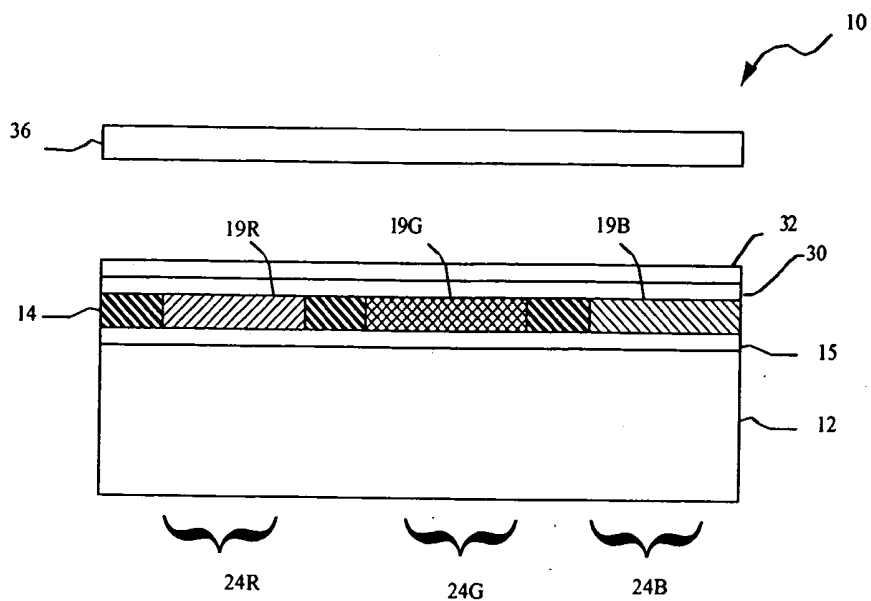


Fig. 3

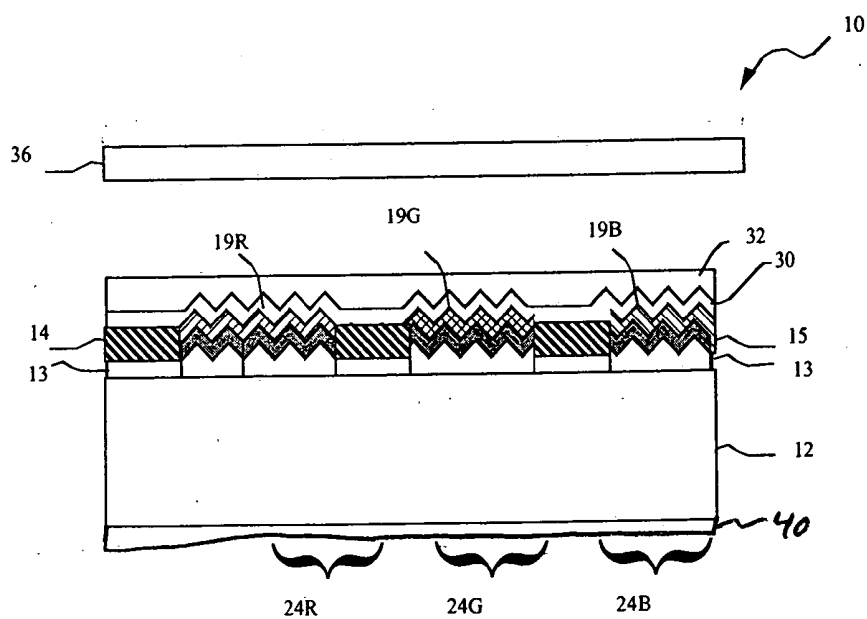


Fig. 4

## ORGANIC POLARIZED LIGHT EMITTING DIODE DISPLAY WITH POLARIZER

### FIELD OF THE INVENTION

[0001] The present invention relates to organic light emitting diode displays, and more particularly to increasing the light output from the emissive layers.

### BACKGROUND OF THE INVENTION

[0002] It is known to use polarizers with flat panel displays such as LCD and OLED displays to reduce the reflection of ambient light on the front of the flat panel displays. Circular polarizers are known to improve contrast in light emitting displays, for example, as disclosed in U.S. Pat. No. 4,100,455 issued Jul. 11, 1978 to DuBois; JP 03-222287; and U.S. Pat. No. 6,549,335 B1 issued Apr. 15, 2003 to Trapani et al. U.S. Pat. No. 6,392,727 B1 issued May 21, 2002 to Larson et al. describes the use of circular polarizers with LCD flat-panel displays.

[0003] However, in an OLED display, circular polarizers while absorbing more than 99% of the ambient light incident on the polarizer, also absorb up to 60% of the light emitted from the OLED display. Moreover, much of the light output from the emissive elements in the OLED is absorbed within the device. Because the light emission from the OLED is unpolarized and Lambertian, light is emitted equally in all directions so that some of the light is emitted forward to a viewer, some is emitted to the back of the device and is either reflected forward to a viewer or absorbed, and some of the light is emitted laterally and trapped and absorbed by the various layers comprising the device. If a polarizer is used to enhance contrast, the polarizer also absorbs a substantial portion of the light. Thus in an OLED display with a polarizer, over 90% of the emitted light may be lost.

[0004] It has been proposed to use a periodic, corrugated, grating structure to induce surface plasmon coupling for the light emitting layer in an organic luminescent device, thereby inhibiting lateral transmission and wave guiding of emitted light while increasing the efficiency and the light output of the structure. See Extraordinary transmission of organic photoluminescence through an otherwise opaque metal layer via surface plasmon cross coupling by Gifford et al., *Applied Physics Letters*, Vol. 80, No. 20, May 20, 2002, pp. 3679-3681. Using this technique, it is theoretically possible to outcouple up to 93% of the light emitted by the organic luminescent materials in an organic luminescent device, however this technique does not reduce the reflectance of ambient light from the surface of the display.

[0005] There is a need therefore for an improved organic light emitting diode display structure that avoids the problems noted above and improves the efficiency of the display for practical devices.

### SUMMARY OF THE INVENTION

[0006] The need is met by providing an organic light emitting diode display that includes a substrate; a plurality of OLEDs formed on the substrate, the OLEDs emitting polarized light wherein the OLEDs comprise a layer defining a periodic grating structure; a first electrode layer conforming to the grating structure; an OLED material layer formed over the first electrode layer and conforming to the

grating structure; and a second electrode layer formed over the OLED material layer and conforming to the grating structure, wherein the first and/or second electrode layers are metallic layers, whereby the periodic grating structure induces surface plasmon cross coupling in the metallic electrode layer(s) to emit polarized light; and a polarizer located over the substrate through which the polarized light is emitted.

### Advantages

[0007] The display of the present invention has the advantage of providing a higher contrast and having a higher efficiency.

### BRIEF DESCRIPTION OF THE DRAWINGS

[0008] FIG. 1 is a schematic cross sectional diagram of a top emitting OLED display according to the present invention;

[0009] FIG. 2 is a schematic cross sectional diagram of a prior art top emitting OLED display;

[0010] FIG. 3 is a schematic cross sectional diagram of a prior art bottom emitting OLED display; and

[0011] FIG. 4 is a schematic cross sectional diagram of a bottom emitting OLED display according to the present invention.

### DETAILED DESCRIPTION OF THE INVENTION

[0012] Referring to FIG. 2, a prior art top emitting OLED display device 10 includes a substrate 12, and a thin film transistor (TFT) active matrix layer 14 comprising an array of TFTs that provides power to OLED elements. A patterned and planarized first insulating layer 16 is provided over the TFT active matrix layer, and an array of first electrodes 18 are provided over the planarized insulating layer 16 and in electrical contact with the TFT active matrix layer. A patterned second insulating layer 17 is provided over the array of first electrodes 18 such that at least a portion of the each of the first electrodes 18 is exposed.

[0013] Over the first electrodes and insulating layers are provided red, green, and blue-emitting organic OLED elements, 19R, 19G, and 19B, respectively. These elements are composed of further layers as described in more detail below. Herein, the collection of OLED elements, including hole injection, hole transport, and electron transport layers may also be referred to as the OLED layer 19. The light emitting area is generally defined by the area of the first electrode 18 in contact with the OLED elements. Over the OLED layer 19 is provided a transparent, common second electrode 30 that has sufficient optical transparency to allow transmission of the generated red, green, and blue light. An optional second electrode protection layer 32 may be provided to protect the electrode and underlying layers. Each first electrode in combination with its associated OLED element and second electrode is herein referred to as an OLED. A typical top emitting OLED display device comprises an array of OLEDs wherein each OLED emits red, green or blue. A gap, generally filled with inert gas or a transmissive polymer material separates the electrode protection layer from an encapsulating cover 36. The encapsu-

lating cover **36** may also be a layer deposited directly on the common second electrode **30** or the optional second electrode protection layer **32**.

[0014] In operation, the thin film transistors in TFT layer **14** control current between the first electrodes **18**, each of which can be selectively addressed, and the common second electrode **30**. Holes and electrons recombine within the OLED elements to emit light **24R**, G and B from the light emitting elements **19R**, G and B respectively. Because the layers are so thin, typically several hundred angstroms, they are largely transparent.

[0015] Referring to **FIG. 1** a top emitter embodiment of the present invention includes a substrate **12**, TFT layer **14**, an insulating layer **16**, first patterned electrode **18**, and second insulating layer **17**. Conventional OLED layers **19** are deposited upon the insulating layer **17** and first patterned metal electrodes **18**. A second, common electrode **30** and protection layer **32** are deposited above the OLED layers **19**. The display **10** is encapsulated with an encapsulating cover or layer **36**. A polarizer **40** is affixed to the encapsulating cover or layer **36** either on the outside (as shown) or inside the encapsulating cover or layer **36** (not shown) where it may be protected by the encapsulating cover or layer **36**. Preferably the polarizer **40** is a circular polarizer conventionally comprising a linear polarizer in combination with a quarter wave plate.

[0016] The insulating layer **16** is made of conventional materials but is not a conventional planarization layer as in the prior art but rather has a periodic physical grating structure that makes the layer thicker in some locations and thinner in others. The size and period of the grating structure is selected to be effective to cause surface plasmon cross coupling in overlying metallic layers that conform to the grating structure. In particular, the first patterned metal electrode **18** has a similar periodic structure, as do the OLED layers **19**. The second electrode layer **30** is likewise conformable to the grating structure, but the top surface of the second electrode layer **30** or layers above the second electrode **30** may, or may not, conform to the periodic grating structure.

[0017] In a preferred embodiment, the periodic grating structure of the insulating layer **16** differs for each of the red, green, and blue OLED light emitting areas **19R**, **19G**, and **19B** respectively. The period of the grating structure is centered on the frequency of light emitted by the OLED materials. For example, the periodic structure of the insulating layer **16** can have a period ranging from 200 to 1000 nm. The height of the physical structure is about 100 nm although larger or smaller heights are possible; the minimum thickness of the insulating layer must be sufficient to provide good insulation between the first patterned metal electrode **18** and the thin film electronics devices **14**. The period and heights of the periodic grating structure affect the frequency of optimum cross coupling and angular dependence. In general, the OLED element layer should be as thin as possible to cause as much energy as possible to undergo surface plasmon cross coupling in the metallic layers. The insulating layer **16** may be reflective or transmissive, or may be opaque to increase the contrast of the device. The insulating layer **16** is made by conventional means, for example photolithography.

[0018] In operation, current is passed via the electrodes **18** and **30** through the light emitting elements **19** causing light to be emitted both upward through second electrode **30** and downward toward the substrate. The periodic structure of the

first patterned metal electrode **18** and the OLED layer **19** causes surface plasmon cross coupling between the layers. The surface plasmon effect has the additional benefit of reducing the absorption of light in the electrode, further increasing the light output from the device. The emission from the OLED device is no longer Lambertian, but is highly directional along an axis perpendicular to the display and includes polarized emission. The light emitted forward is seen by a viewer. The light emitted backward is either absorbed or reflected by the insulating layer. The polarizer **40** is oriented such that the emitted polarized light **24** passes through the polarizer **40** without being substantially absorbed. As known in the prior art, approximately one half of the non-polarized light emission is absorbed by the polarizer **40**. Ambient light incident on the polarizer **40** is absorbed as known in the prior art. Hence, the present invention provides an improvement in light output and contrast.

[0019] The present invention may be applied to both a top emitter (wherein light is emitted through the cover as described above) or a bottom emitter (wherein light is emitted through the substrate). In the bottom emitter case, the periodic grating structure may be created directly upon the substrate **12**, or to insulating or conducting layers applied to the substrate. Referring to **FIG. 3**, a prior art bottom emitter device uses a patterned conductive layer **13** of indium tin oxide (ITO) deposited on the substrate to conduct current to the light emitting areas.

[0020] Referring to **FIG. 4**, in a bottom emitter OLED display according to the present invention, the ITO is provided with a periodic grating pattern similar to that of the insulating layer **16** of the top emitter in the areas where light is emitted. The grating pattern is created in the ITO layer using well known photolithography techniques. A thin metal electrode layer **15** is deposited on the corrugated ITO, the organic materials are conformably deposited on the metal layer, and the remainder of the depositions are as described earlier. The thin metal electrode **15** may be omitted, but surface plasmon coupling will not be supported in the ITO layer alone. A polarizer **40** is located over the substrate **12** and arranged so that emitted, polarized light **24** passes through the substrate **12** without being substantially absorbed.

[0021] Because the emitted light **24** is polarized and has an angular dependence on frequency, a diffuser may be included in the display **10** to mitigate the effect of color aberrations. This diffuser may be applied to the exterior of the device, for example, or the diffuser may be incorporated into the cover (for a top emitter) or the substrate (for a bottom emitter).

[0022] In another embodiment of the present invention, the period of the structure of the insulating layer **16** and conformable layers deposited upon it may be constant across the device rather than different for each individual color **19R**, G, and B. This simplifies the construction of the device with some loss in efficiency of the light output and angular dependence of frequency.

[0023] The present invention can be employed in most top or bottom emitting OLED device configurations. These include simple structures comprising a separate anode and cathode per OLED and more complex structures, such as passive matrix displays having orthogonal arrays of anodes and cathodes to form pixels, and active matrix displays where each pixel is controlled independently, for example, with a thin film transistor (TFT). As is well known in the art,

OLED devices and light emitting layers include multiple organic layers, including hole and electron transporting and injecting layers, and emissive layers. Such configurations are included within this invention.

[0024] In a preferred embodiment, the invention is employed in a device that includes Organic Light Emitting Diodes (OLEDs) which are composed of small molecule or polymeric OLEDs as disclosed in but not limited to U.S. Pat. No. 4,769,292, issued Sep. 6, 1988 to Tang et al. and U.S. Pat. No. 5,061,569, issued Oct. 29, 1991 to VanSlyke et al. Many combinations and variations of organic light emitting displays can be used to fabricate such a device.

[0025] The invention has been described in detail with particular reference to certain preferred embodiments thereof, but it will be understood that variations and modifications can be effected within the spirit and scope of the invention.

#### Parts List

[0026]	10	OLED display device
[0027]	12	substrate
[0028]	13	ITO layer
[0029]	14	TFT layer
[0030]	15	metal electrode layer
[0031]	16	insulating layer
[0032]	17	second insulating layer
[0033]	18	first electrodes
[0034]	19	OLED layer
[0035]	19R	red-emitting organic materials layer
[0036]	19G	green-emitting organic materials layer
[0037]	19B	blue-emitting organic materials layer
[0038]	24	emitted light
[0039]	24R	red light
[0040]	24G	green light
[0041]	24B	blue light
[0042]	30	second electrode
[0043]	32	second electrode protection layer
[0044]	36	encapsulating cover
[0045]	40	circular polarizer

What is claimed is:

1. An organic light emitting diode display, comprising:
  - a) a substrate;
  - b) a plurality of OLEDs formed on the substrate, the OLEDs emitting polarized light wherein the OLEDs comprise:
    - i) a layer defining a periodic grating structure,
    - ii) a first electrode layer conforming to the grating structure,

iii) an OLED material layer formed over the first electrode layer and conforming to the grating structure, and

iv) a second electrode layer formed over the OLED material layer and conforming to the grating structure, wherein the first and/or second electrode layers are metallic layers, whereby the periodic grating structure induces surface plasmon cross coupling in the metallic electrode layer(s) to emit polarized light; and

c) a polarizer located over the substrate through which the polarized light is emitted.

2. The display claimed in claim 1, wherein the polarizer is a circular polarizer.

3. The display claimed in claim 1, wherein the display is a top emitting display having an encapsulating cover, and the polarizer is affixed to the encapsulating cover.

4. The display claimed in claim 1, wherein the display is a bottom emitting display and the polarizer is affixed to the substrate.

5. The display claimed in claim 1, wherein the OLED material layer includes portions for emitting different colors of light and the period of the grating structure is different for the different colors.

6. The display claimed in claim 1, wherein the layer defining a grating structure is a light absorbing layer.

7. The display claimed in claim 1, wherein the metallic layers are opaque.

8. The display claimed in claim 1, wherein the grating structure is a two dimensional grating.

9. The display claimed in claim 1, wherein the display is an active matrix display.

10. The display claimed in claim 1, wherein the display is a passive matrix display.

11. The display claimed in claim 1, wherein the first electrode layer is non-metallic and further comprising a metallic layer formed on the first portions of the first electrode layer and conforming to the grating structure.

12. The display claimed in claim 1, wherein the first electrode layer is indium tin oxide.

13. The display claimed in claim 1, wherein the OLEDs further comprise an insulating layer formed over the substrate, the insulating layer defining a periodic grating structure; a first electrode layer formed over the insulating layer and conforming to the grating structure; an OLED material layer formed over the first electrode layer and conforming to the grating structure; and a second electrode layer formed over the OLED material layer and conforming to the grating structure, wherein the first and/or second electrode layers are metallic layers, whereby the periodic grating structure induces surface plasmon cross coupling in the metallic electrode layer(s).

14. The display claimed in claim 5, further comprising a diffuser to mitigate the effect of color aberrations.

15. The display claimed in claim 14, wherein the diffuser is applied to the exterior of the device.

16. The display claimed in claim 14, wherein the diffuser is incorporated into the cover of a top emitting display or the substrate of a bottom emitting display.

\* \* \* \* \*

专利名称(译)	有机偏振发光二极管显示器，带偏振器		
公开(公告)号	<a href="#">US20050088084A1</a>	公开(公告)日	2005-04-28
申请号	US10/694550	申请日	2003-10-27
[标]申请(专利权)人(译)	伊斯曼柯达公司		
申请(专利权)人(译)	伊士曼柯达公司		
当前申请(专利权)人(译)	伊士曼柯达公司		
[标]发明人	COK RONALD S		
发明人	COK, RONALD S.		
IPC分类号	H01L27/32 H01L51/52 H05B33/00 H05B33/22		
CPC分类号	H01L27/3211 H01L27/3244 H01L27/3281 H01L2251/5315 H01L51/5281 H01L51/5293 H01L51/5262		
外部链接	<a href="#">Espacenet</a> <a href="#">USPTO</a>		

#### 摘要(译)

有机发光二极管显示器包括基板;多个OLED形成在基板上，OLED发射偏振光，其中OLED包括限定周期性光栅结构的层;符合光栅结构的第一电极层; OLED材料层，形成在第一电极层上并与光栅结构一致;形成在OLED材料层上并符合光栅结构的第二电极层，其中第一和/或第二电极层是金属层，由此周期性光栅结构在金属电极层中引起表面等离子体交叉耦合。发出偏振光;和位于基板上方的偏振器，通过该偏振器发射偏振光。

